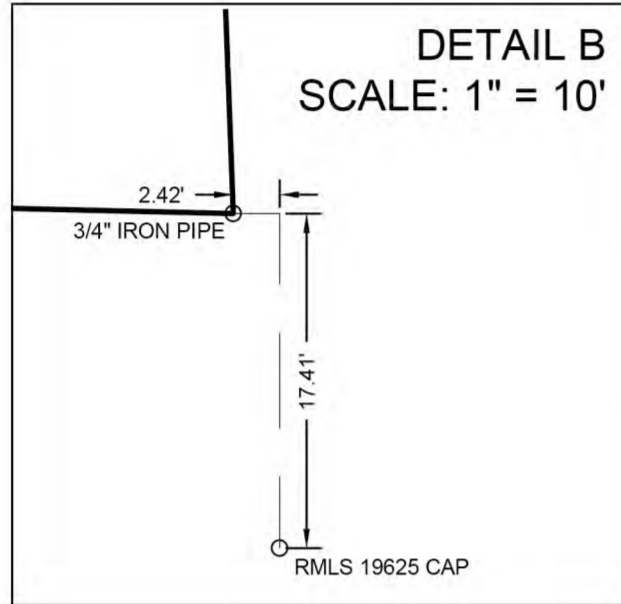
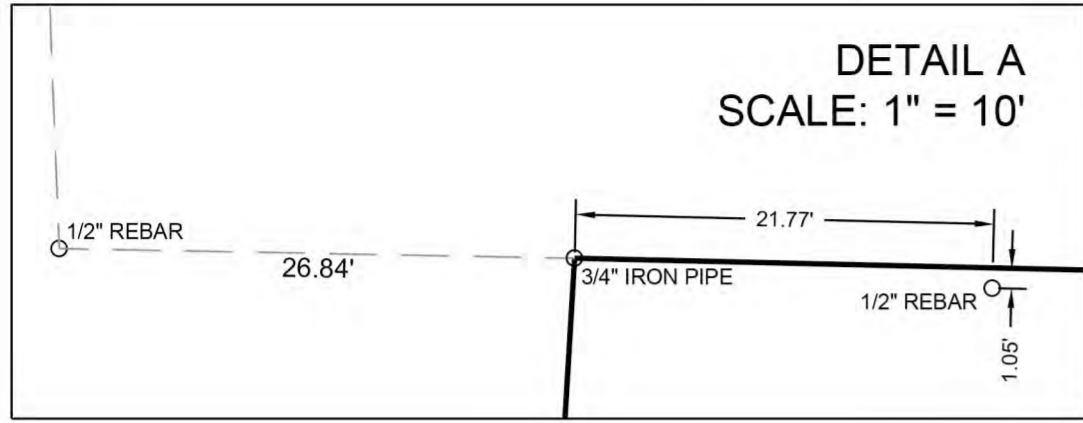


Final Plat IVILO SUBDIVISION

PART OF THE NORTH 1/2, SECTION 6, TOWNSHIP 12 SOUTH, RANGE 65 WEST OF
THE SIXTH PRINCIPAL MERIDIAN, COUNTY OF EL PASO, STATE OF COLORADO



DENSITY AND DIMENSIONAL STANDARDS FOR RESIDENTIAL DISTRICT RR-2.5						
ZONING DISTRICT	AREA	WIDTH (AT FRONT SETBACK LINE)	FRONT	REAR	SIDE	MAXIMUM LOT COVERAGE
RR-2.5	2.5 ACRES	200 Ft	25 Ft	25 Ft	15 Ft	NONE

CENTERLINE CURVE DATA						
CURVE #	RADIUS	LENGTH	CHORD	DELTA	TANGENT	BEARING
C1	38.00	43.34	41.03	65°21'17"	24.37	S 30°32'02" E
C2	35.00	38.35	36.46	62°46'31"	21.35	N 31°49'25" W
C3	35.00	54.98	49.50	90°00'00"	35.00	N 44°33'51" E

LEGEND

- Monument Found (1/2" Rebar),
Origin unknown unless otherwise noted
- 1/2"x24" Rebar w/PLS38374 Cap Set
- △ Section Corner, NOTE: All section corner monument origins are unknown unless otherwise noted.
- * Assumed Bearing
- (C) Calculated Dimension
- (M) Measured Dimension
- (R1) Recorded Dimension - Land Survey Plat by Rocky Mountain Land Services dated December 14, 2015
- (R4) Recorded Dimension - Land Survey Plat by Crossed Paths Surveying Services dated June 28, 2022
- I/E Ingress/Egress Easement
- ▨ Ingress/Egress Easement Hatch
- U/E Utility Easement
- D/E Drainage Easement
- T/E Trail Easement

